

Visual Treats in Dermatology

Segmental nevus depigmentosus

Maisnam Sophia Devi¹, Roda Laishram¹

¹Department of Dermatology, All India Institute Medical Sciences, Rishikesh, Uttarakhand, India.



***Corresponding author:**

Maisnam Sophia Devi,
 Department of Dermatology,
 All India Institute Medical
 Sciences, Rishikesh,
 Uttarakhand, India.

sophiamaisnam20@gmail.com

Received : 20 March 2022

Accepted : 28 March 2022

Published : 14 April 2022

DOI

10.25259/CSDM_30_2022

Quick Response Code:



A 6-year-old boy presented with whitish colored lesion over the right side of the face at 2 years of age. The lesion was gradually increasing in size with the child's growth and there was no loss of sensation. On cutaneous examination, a solitary well-defined off-white macule with an irregular border extends from the right forehead to the malar area and nose with sharp demarcation in the midline. Smaller macules were present around the margin giving a 'splashed paint' appearance



Figure 1: Solitary well-defined off-white macule with irregular border and multiple similar small macules at the margin ('splashed paint appearance'), extending from the right forehead to the right malar area and nose with sharp demarcation in midline.

This is an open-access article distributed under the terms of the Creative Commons Attribution-Non Commercial-Share Alike 4.0 License, which allows others to remix, transform, and build upon the work non-commercially, as long as the author is credited and the new creations are licensed under the identical terms.

© 2022 Published by Scientific Scholar on behalf of CosmoDerma

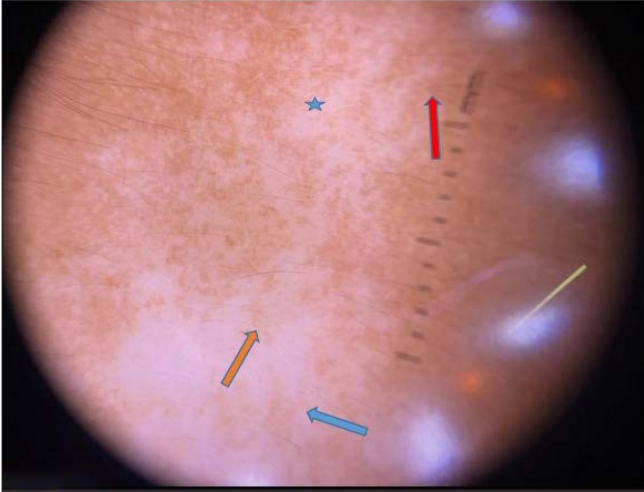


Figure 2: Dermoscopy of the lesion shows irregular whitish areas (star), reticular pigment network (blue arrow), pseudopods at the periphery (red arrow), and perifollicular pigmentation (orange arrow) (3Gen DermLite IV Polarized Dermoscope).

along with poliosis of the eyebrow [Figure 1]. Diascopy was negative and Wood's lamp examination revealed an off-white color. Dermoscopy of the lesion shows irregular whitish areas with few areas of reticular pigment network. The irregular extensions are seen as pseudopods at the periphery with perifollicular pigmentation and there is the absence of perifollicular hyperpigmentation [Figure 2]. Based on the

criteria given by Coup, a diagnosis of nevus depigmentosus was made. Nevus depigmentosus is a pigmentary disorder that presents with a nonprogressive sharply demarcated hypopigmented macule usually visible at birth or early childhood.^[1]

Declaration of patient consent

The authors certify that they have obtained all appropriate patient consent.

Financial support and sponsorship

Nil.

Conflicts of interest

There are no conflicts of interest.

REFERENCE

1. Kim SK, Kang HY, Lee ES, Kim YC. Clinical and histopathological characteristics of nevus depigmentosus. *J Am Acad Dermatol* 2006;55:423–8.

How to cite this article: Devi MS, Laishram R. Segmental nevus depigmentosus. *CosmoDerma* 2022;2:31.