

Visual Treats in Dermatology

## Lichen nitidus unusual site and atypical morphology

Sahiba Rafi<sup>1</sup>, Pradeep S. Nair<sup>2</sup>

<sup>1</sup>Department of Dermatology and Venereology, Government TD Medical College, Alappuzha, Kerala, <sup>2</sup>Department of Dermatology and Venereology, Government Medical College, Thiruvananthapuram, Kerala, India.



**\*Corresponding author:**

Pradeep S. Nair,  
Department of Dermatology  
and Venereology,  
Government Medical College,  
Thiruvananthapuram, Kerala,  
India.

[dvmchtvm@yahoo.co.in](mailto:dvmchtvm@yahoo.co.in)

Received: 01 October 2023  
Accepted: 04 October 2023  
Published: 18 October 2023

DOI  
[10.25259/CSDM\\_203\\_2023](https://doi.org/10.25259/CSDM_203_2023)

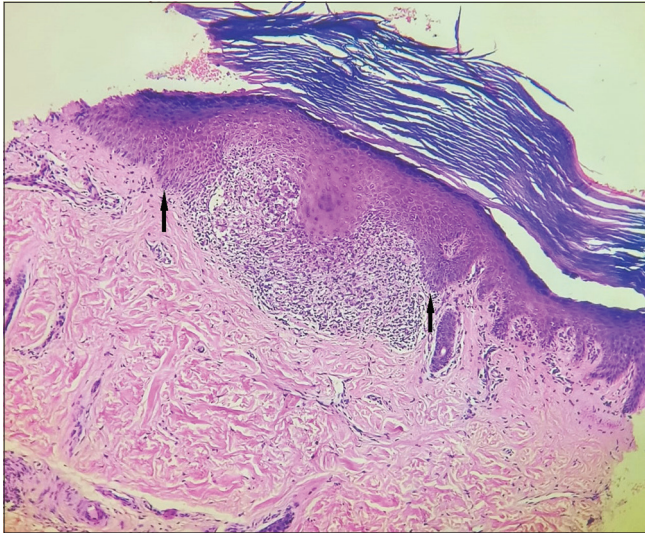
Quick Response Code:



An 11-year-old boy presented with asymptomatic lesions on the right sole for 3 months. There was no preceding trauma. There was a negative history of topical application. On examination, there were multiple discrete and confluent hyperpigmented and skin-colored pin-point papules with pits on the plantar crease extending from the medial aspect of the right plantar region to the midline just below the forefoot [Figure 1]. Pitted keratolysis and plantar punctuate warts were the differentials considered. Skin biopsy from the plantar lesion revealed a mononuclear infiltrate just below the epidermis with the rete pegs “clutching” the infiltrate resembling a “claw clutching a ball,” diagnostic of lichen nitidus [Figure 2]. The patient was treated with clobetasol–salicylic acid



**Figure 1:** Multiple discrete and confluent hyperpigmented papules and pits on plantar region.



**Figure 2:** Skin biopsy showing hyperkeratosis, irregular acanthosis with rete pegs “clutching” mononuclear infiltrate in the upper dermis, H and E  $\times$  100.

ointment (3%), and the lesions resolved. Rare presentations of lichen nitidus are involvement of the palms and soles, generalized lesions, linear, Blaschkoid pattern, hemorrhagic, purpuric, and mucosal involvement. We are reporting one more morphology – pits. The thick stratum corneum and pressure effect on the plantar region due to shearing forces may cause the typical morphology of dermatosis to be modified in the plantar region.<sup>[1]</sup>

### Declaration of patient consent

The authors certify that they have obtained all appropriate patient consent.

### Financial support and sponsorship

Nil.

### Conflicts of interest

There are no conflicts of interest.

### Use of artificial intelligence (AI)-assisted technology for manuscript preparation

The authors confirm that there was no use of Artificial Intelligence (AI)-assisted technology for assisting in the writing or editing of the manuscript, and no images were manipulated using AI.

### REFERENCE

1. Munro CS, Cox NH, Marks JM, Natarajan S. Lichen nitidus presenting as palmoplantar hyperkeratosis and nail dystrophy. *Clin Exp Dermatol* 1993;18:381-3.

**How to cite this article:** Rafi S, Nair PS. Lichen nitidus unusual site and atypical morphology. *CosmoDerma* 2023;3:143.