

Visual Treats in Dermatology

## Hypopigmented plaque with cut dragon fruit appearance

Spandana Devarahalli Krishnamurthy, MD (DVL)<sup>1</sup>, Mahalaxmi Khatagave, MD (DVL)<sup>1</sup>, M. Madhu, MD (DVL)<sup>2</sup>

<sup>1</sup>Department of Dermatology, Venereology and Leprosy, Bangalore Medical College and Research Institute, Bengaluru, <sup>2</sup>Department of Dermatology, Venereology and Leprosy, S. S Institute of Medical Sciences and Research Center, Davanagere, Karnataka, India.



**\*Corresponding author:**

Dr. Spandana Devarahalli  
Krishnamurthy,  
Department of Dermatology,  
Venereology and Leprosy,  
Bangalore Medical College and  
Research Institute, Bengaluru,  
Karnataka, India.

spandanasinchu@gmail.com

Received: 05 September 2024

Accepted: 22 October 2024

Published: 29 November 2024

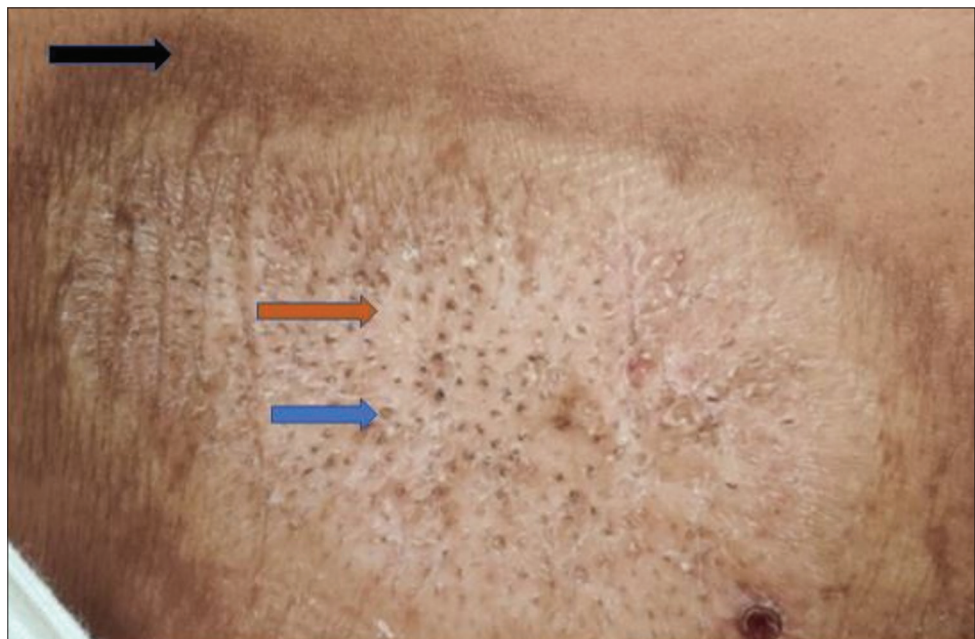
DOI

10.25259/CSDM\_152\_2024

Quick Response Code:



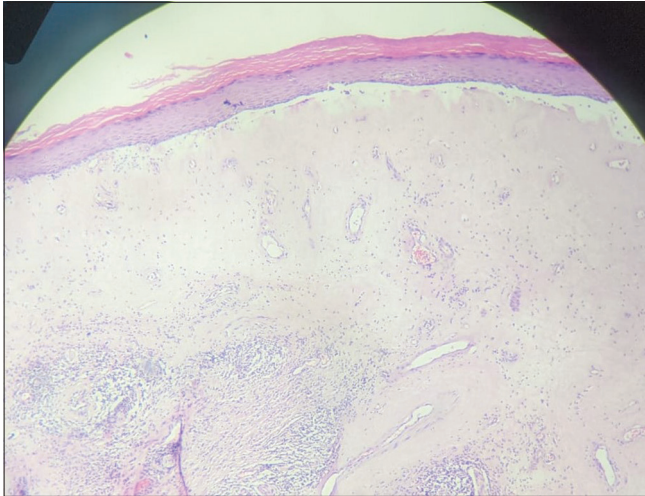
A 32-year-old male presented with a whitish, hypopigmented asymptomatic skin lesion over his upper back for six months, with no similar lesions reported elsewhere. On examination, a 5 × 5 cm hypopigmented atrophic plaque, with follicular plugging and peripheral hyperpigmentation was observed on the right upper back, resembling the appearance of a cut dragon fruit [Figure 1]. Dermoscopy revealed structureless areas, comedo-like openings, white chrysalis-like structures, and telangiectasia. Histopathology showed follicular plugging, epidermal thinning, loss of rete ridges, focal basal cell vacuolization, and edema and hyalinization of the papillary dermis [Figure 2]. After correlating clinical findings, dermoscopic results, and histopathological features, the diagnosis of extragenital lichen sclerosus et atrophicus (LSA) was made.



**Figure 1:** Peripheral hyperpigmentation corresponds to the fruit's surface (black arrow), sclerosis corresponds to the fruit's pulp (orange arrow), and dots indicate follicular plugging, which corresponds to the fruit's seed (blue arrow).

This is an open-access article distributed under the terms of the Creative Commons Attribution-Non Commercial-Share Alike 4.0 License, which allows others to remix, transform, and build upon the work non-commercially, as long as the author is credited and the new creations are licensed under the identical terms.

©2024 Published by Scientific Scholar on behalf of CosmoDerma



**Figure 2:** Histopathology showing epidermal thinning, loss of rete ridges, focal basal cell vacuolization, and edema and hyalinization of the papillary dermis (H&E  $\times 40$ ). H&E: Hematoxylin and eosin.

LSA is a chronic inflammatory skin condition affecting both anogenital and extragenital areas. Extragenital LSA lesions typically begin as polygonal, bluish-white papules that merge into atrophic plaques.<sup>[1]</sup> In the early stages, these plaques often exhibit prominent follicular plugs, which gradually disappear, leaving smooth, porcelain-like plaques behind. The similarity between these follicular plugs and the seeds within the pulp of a cut dragon fruit underscores the natural world's influence on dermatological terminology.<sup>[2]</sup>

### Ethical approval

The Institutional Review Board approval is not required.

### Declaration of patient consent

The authors certify that they have obtained all appropriate patient consent.

### Financial support and sponsorship

Nil.

### Conflicts of interest

There are no conflicts of interest.

### Use of artificial intelligence (AI)-assisted technology for manuscript preparation

The authors confirm that there was no use of artificial intelligence (AI)-assisted technology for assisting in the writing or editing of the manuscript and no images were manipulated using AI.

### REFERENCES

1. Ganesan L, Parmar H, Das JK, Gangopadhyay A. Extragenital lichen sclerosis et atrophicus. *Indian J Dermatol* 2015;60:420.
2. Inamadar AC. Extra-genital lichen sclerosis reminiscent of cut dragon fruit. *Eur J Pediatr Dermatol* 2020;30:182.

**How to cite this article:** Krishnamurthy SD, Khatagave M, Madhu M. Hypopigmented plaque with cut dragon fruit appearance. *CosmoDerma*. 2024;4:139. doi: 10.25259/CSDM\_152\_2024